

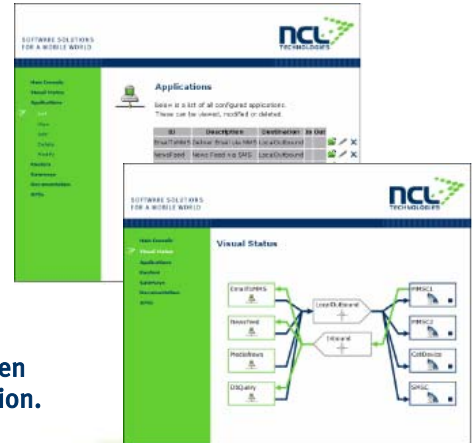


## Provato

### Enabling Mobile Messaging in J2EE and .NET

Building Value Added Services that use mobile messaging technology presents unique challenges for software teams within mobile networks operators and wireless application developers:

- Applications need to interface with multiple message services using different protocols and configurations
- The configuration of the application may change between development and production, but also while in production.
- The application needs to be robust enough to handle communication failures at runtime.



**Provato** meets these challenges - and more - by providing a configurable, manageable service that handles the task of mobile messaging on behalf of your Value Added Service application. **Provato** integrates closely with J2EE application servers such as BEA WebLogic, IBM WebSphere, Sun ONE, and JBoss to provide easy access to messaging functionality for Enterprise Java Development. The use of JMS with Provato in a J2EE environment provides a powerful bridge between mobile messaging and enterprise software development. **Provato** can be exposed as a Web Service and be accessed from a range of programming environments. The flexibility and power of **Provato** allow the software development team to concentrate on creating and delivering in-house Value Added Services quickly and reliably.

#### Technical Details

- ✓ SMS (Text & Unicode), MMS, EMS, WAP Push, Long Messages, Smart Messages & Delivery Receipts
- ✓ SMS Protocols: UCP, CIMD, SMPP (3.4), Cellular Devices (e.g.TC35)
- ✓ MMS Protocols: MM7, Ericsson & Nokia
- ✓ Multi-routing criteria based on originating application, originating bind (for FMNP), text keywords, source/destination addresses, tariff codes
- ✓ Support for correlation IDs on receipts and responses
- ✓ Dynamic configuration management
- ✓ User-friendly browser-based configuration console
- ✓ SNMP agent functionality for Network Management
- ✓ JMS & Web Services client interfaces (SOAP, Java, C++, .NET and Perl interfaces)
- ✓ Single or cluster node support with connection management and bind fail-over
- ✓ JMX component Management

#### Key Benefits

- ▶ **Better return on investment** - Applications and services can be enhanced and deployed quickly with Provato
- ▶ **A reliable platform for growth** – Provato provides a robust, scalable and flexible enterprise solution that caters for growth in service usage
- ▶ **Future proofed** – With a content-focused interface, applications are ready for new messaging technology
- ▶ **Zero learning curve** – Provato uses existing document standards similar to HTML to create and send complex mobile messages
- ▶ **Any language, any platform** - Deploy reliable mobile message applications quickly from any development language on a range of platforms including SUN, HP, IBM, Linux and Windows environments
- ▶ **No application downtime** - Manage connections to mobile network servers, gateways and devices reliably, configuring alternate message routes in the event of network failure, and configuration can be changed at runtime
- ▶ **A shared resource** - Provato can be shared with a number of concurrent applications and across the local network (LAN)